

# PEPPI & TUUDO

27.08.2025

Katie Fagerström

International Affairs Coordinator

# Intranet

- **Intra.abo.fi**
  - Information about ÅA
  - News from ÅA
  - Microsoft word package
  - How to find help and guides
  - My Tools:
    - Email, peppi, teams, lunch menu, zoom, etc etc...

# Peppi

- You can access peppi at the following link:
- <http://student.abo.fi>
  - With your ÅA username and password
- OR
- Via the intranet:
  - Intra.abo.fi
  - My Tools
  - Peppi

# What can i do in Peppi?

- Enroll to courses
  - Courses in your studyplan will show automatically
    - If you want to take other courses you will need to search for those
- Grades in peppi
- Enroll to exams in peppi
- See your schedule
- Update your contact information (please add your address in Finland)
- Download your Certificate of Study & Transcript of records
- **Lets take a look at peppi then 😊**

# How to download your Certificate of Study from Peppi

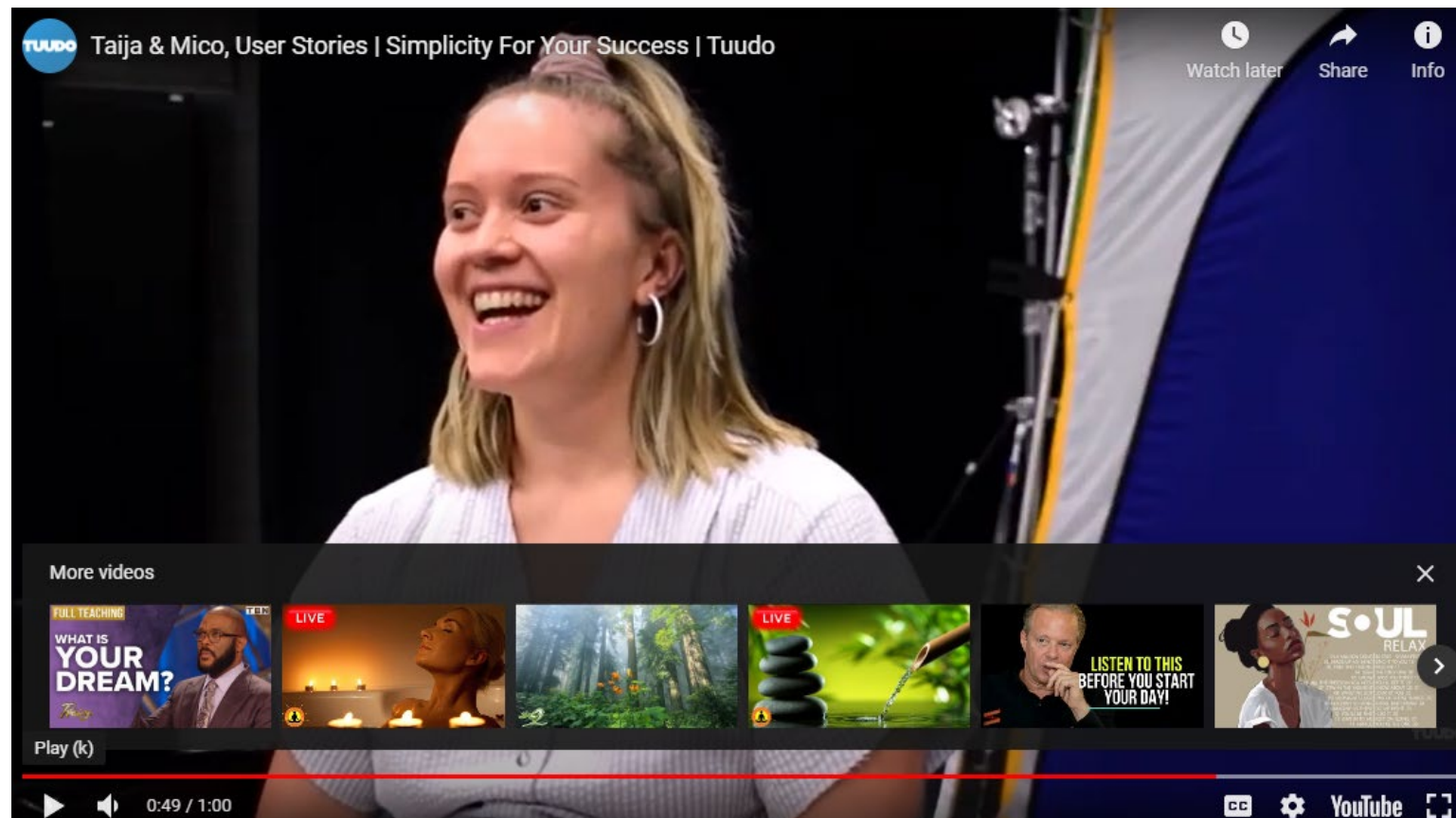
Follow these instructions to download your documents:

- Log in to <https://studie.abo.fi> using your ÅAU user account
- Choose the option “E-certificates” from the top row
- You will then be taken to a page called “new order” and there you select the type of certificate you want to download. Either a Certificate of Study or a Transcript of Records
- Choose if you want the document in English or Swedish
- Select “order”
- You then find the document in the “Documents” tab at the top of the page
- Select the document you want to download (the newest one you have ordered is at the top of the page) and select download.

# TUUDO

- Tuudo is an app for students and your everyday studies.
- In the app you can see your class schedule, register for courses, check the restaurant menus, check how to get around the city, and much much more.
- **TUUDO is best to check your class schedule and have it on your phone.**

# TUUDO

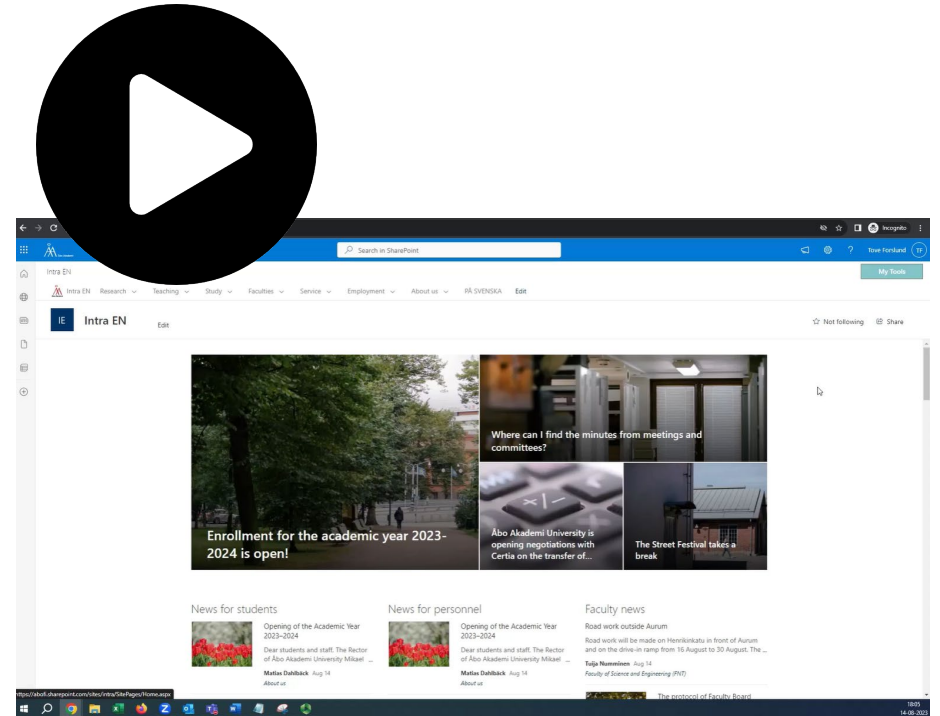




# MOODLE

<https://www.abo.fi/en/study/moodle/>

- At Åbo Akademi University we use the learning platform **Moodle**, where you will find the assignments and course material for most courses.
- Submit assignments, receive comments and grades
- You need to be registered for the course in Peppi before you can access the course pages in Moodle
- Usually you also need to register for the course in Moodle separately – course key will be given by the teacher when the course is available for you to access





# Remember:

- Enroll to your courses over the weekend.
  - If you have problems with peppi and enrolling to your courses, send us a mail at [exchange@abo.fi](mailto:exchange@abo.fi) **AND** email the teacher of the course that you would like to enroll to the course and for info of when the course will start.
- Set up your TUUDO app so you can easily see your schedule
- Check your Åbo Akademi email regularly

# Questions?