

PEPPI & TUUDO

03.01.2025

Sara Joas, International Coordinator

Julia Fredman, International Coordinator

Intranet

- intra.abo.fi
 - Information about ÅAU and studying here
 - Requires login (long username: firstname.lastname@abo.fi)
 - [News](#) from ÅAU
 - Help and guides
 - [ICT](#)
 - Microsoft Office 365-package
 - My Tools (shortcuts):
 - Email, Peppi, lunch menu, Zoom, Teams etc etc...
 - Edit to choose your own shortcuts



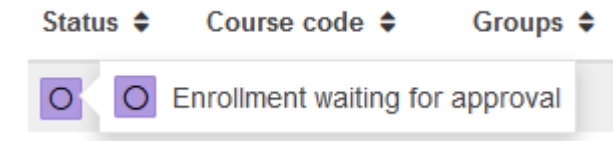
Peppi

- You can access Peppi at the following link:
- <http://studie.abo.fi>
 - ÅAU username (short) and password
- OR
- Via the intranet:
 - intra.abo.fi -> login
 - My Tools
 - Peppi for students

Peppi

Peppi = study planning tool at Åbo Akademi University

- **Enroll** to courses
 - My Study Plan – Enrollments – Search for courses
 - Do not worry about the approval of the course, few teachers use this feature



- **Grades**
- Enroll to exams
- See your **schedule**
 - Calendar, Room reservation
- Update your contact information
 - Profile, settings

- **Download** – E-Certificates
 - Certificate of Study
 - Transcript of records

1.

2.

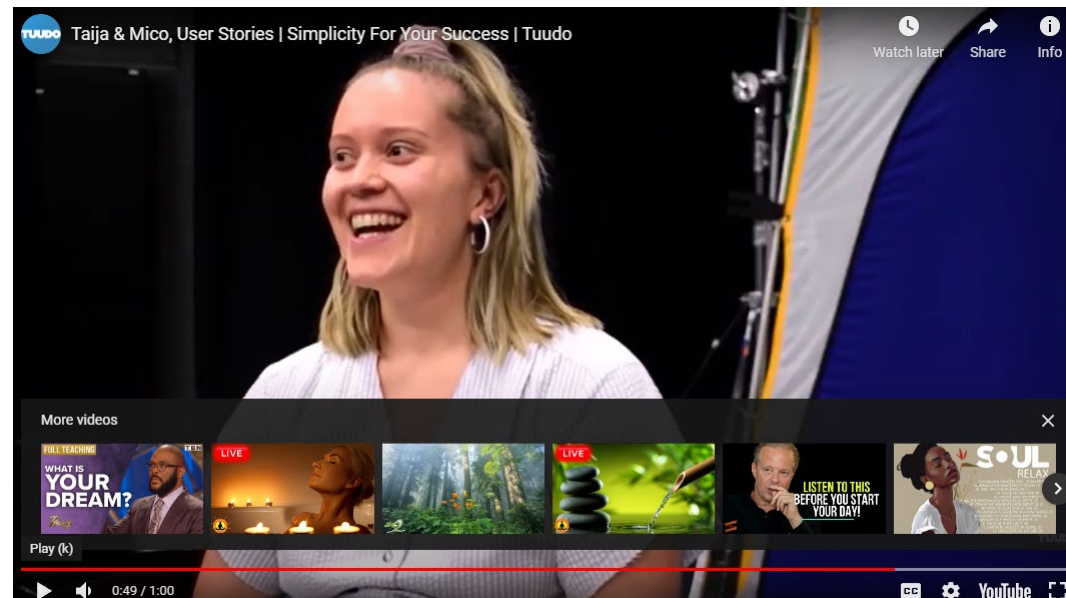
3. **✔ Enrollment saved!**
Enrollment saved for the course version



Let's take a look at peppi then 😊

TUUDO

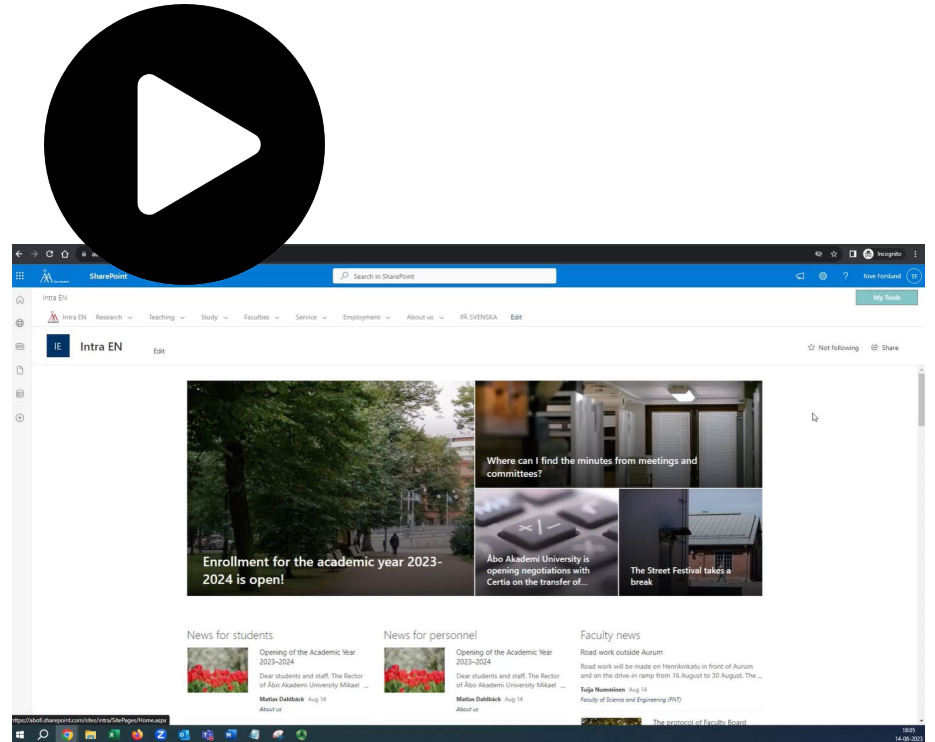
- [Tuudo is an app](#) for students and your everyday studies.
- In the app you can see your class **schedule**, **enroll** to courses, **library**, check the student restaurant **menus**, check how to get around the city, and much much more.
- **TUUDO is best to check your class schedule and have it on your phone.**



MOODLE

www.abo.fi/en/study/moodle/

- At Åbo Akademi University we use the learning platform **Moodle**, where you will find the assignments and course material for most courses.
- Submit assignments, receive comments, feedback, grades
- You need to be registered for the course in Peppi before you can access the course pages in Moodle
- Usually you also need to register for the course in Moodle separately – **course key** will be given by the teacher when the course is available for you to access



Remember:

- Enroll to your courses over the weekend.
 - Please only enroll to courses that have been endorsed and are on your signed LA
 - Still possible to change courses on your LA one time during the Spring semester
 - If you have problems with Peppi and enrolling to your courses, send us an email at exchange@abo.fi
- Enrollment period over? ➡ Email the teacher.
- Enrollment period not started yet? ➡ Remember to enroll when enrollment starts.
- Set up your TUUDO app so you can easily see your schedule
- Check your Åbo Akademi University email regularly – if you forward your emails to your home university email – **check spam folder!**



QUESTIONS?

ORIENTATION WEEK 2025, Exchange students

ASA-building Stora Auditoriet, Fänriksgatan 3B

Åbo Akademi University, ÅBO



	Thursday 2 January	Friday 3 January	Tuesday 7 January	Wednesday 8 January	Thursday 9 January
<p>ARRIVAL DAY</p> <p>Welcome to Finland and to ÅAU!</p>	<p>9.00-10.00 Welcome & Introduction Julia Fredman and Sara Joas</p> <p>10.00-10.15 BREAK</p> <p>10.15-11.00 Academic practices Julia Fredman and Sara Joas</p>	<p>9.00-9.30 Housing in Turku Marja Aapalahti</p> <p>09.30-09.45 Open University Rebecca Karlsson and Carina Gräsbäck</p> <p>09.50-10. 20 Language centre Charlotta Sandberg</p> <p>10.20-10.35 Break</p> <p>10.35-11.05 Library information Eva Höglund</p>	<p>09.00-10.00 Welcome to Finland Katie Fagerström (Zoom)</p> <p>10.05-10.45 Wellbeing in studies, student-life, and Finland Petra Lindblad</p> <p>10:50-11.05 Support for students from the University Chaplains Mia Pusa</p> <p>11:05-11.20 Break</p> <p>11.20-11.50 International House of Turku Jonathon Murphy</p>	<p>9.00-15.00 Visit Digital and Population Data Services Agency with your tutor Självständighetsplan 2</p>	
	LUNCH	LUNCH	LUNCH		
<p>Registration at the Student Service Desk in Gripen 9.00-12.00</p> <p>Bring with you: A valid ID A receipt of the paid Student Union fee</p>	<p>13:30-14.30 Information about Peppi registration for courses Julia Fredman and Sara Joas</p> <p>14.30-14.45 BREAK</p> <p>14:45- 15:15 ICT-Services Tomi Suovuo</p>	<p>12.15-12.45 Sports at ÅAU Outi Lindström</p> <p>12.45-13.15 Safe space and support in case of harassment Jan Kraufvelin</p> <p>13.15-13.30 Break</p> <p>13.30-13.50 Student Union</p> <p>13.55-14.15 ESN</p> <p>14.45 Information for students of Faculty of Social Sciences, Business and Economics, and Law ASAB121 Stansen</p>	<p>13.30-14.30 Questions and answers Julia Fredman and Sara Joas</p> <p>15.00-17.00 Bus tour of Åbo, history and current day Magni Mundi city guides Start outside the Arken building, Fabriksgatan 2 at 15.00</p>	<p>9.00-15.00 Visit Digital and Population Data Services Agency with your tutor Självständighetsplan 2</p>	