



# ÅBO AKADEMI UNIVERSITY LIBRARY



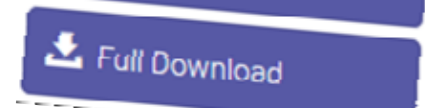
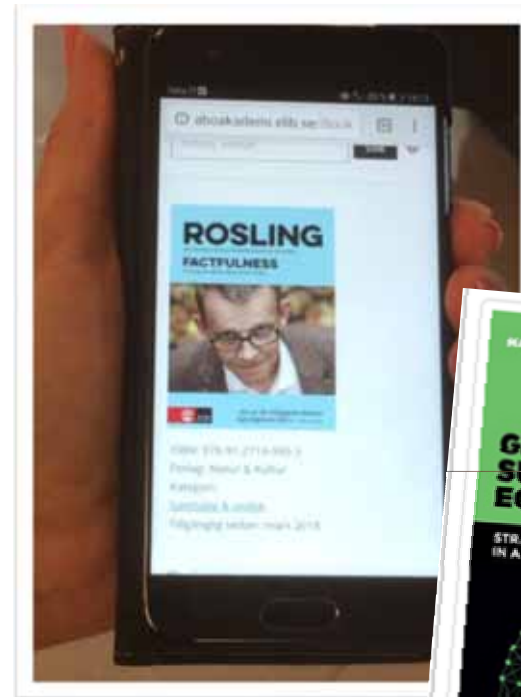
Services and resources 2018-2019  
Eva Costiander-Huldén, Head of services

## WE OFFER...

- Books – printed and electronic
- Printed and electronic dictionaries, encyclopaedias, journals, newspapers
- A place to read, write, study and work in groups
- Guidance and courses in information retrieval

# PRINTED AND ELECTRONIC BOOKS

- ÅAUL has, at least, one copy of every book/journal printed in Finland
- 2 million printed books
- Over 400.000 e-books



# DICTIONARIES

- Access to e-dictionaries via our database Alma
- Subject dictionaries on law, environment, technology etc.



# JOURNALS AND NEWSPAPERS

- Ca 30.000 printed journals
- Ca 24.000 licensed academic e-journals
- PressReader gives you access to 7.500 newspapers from 120 countries



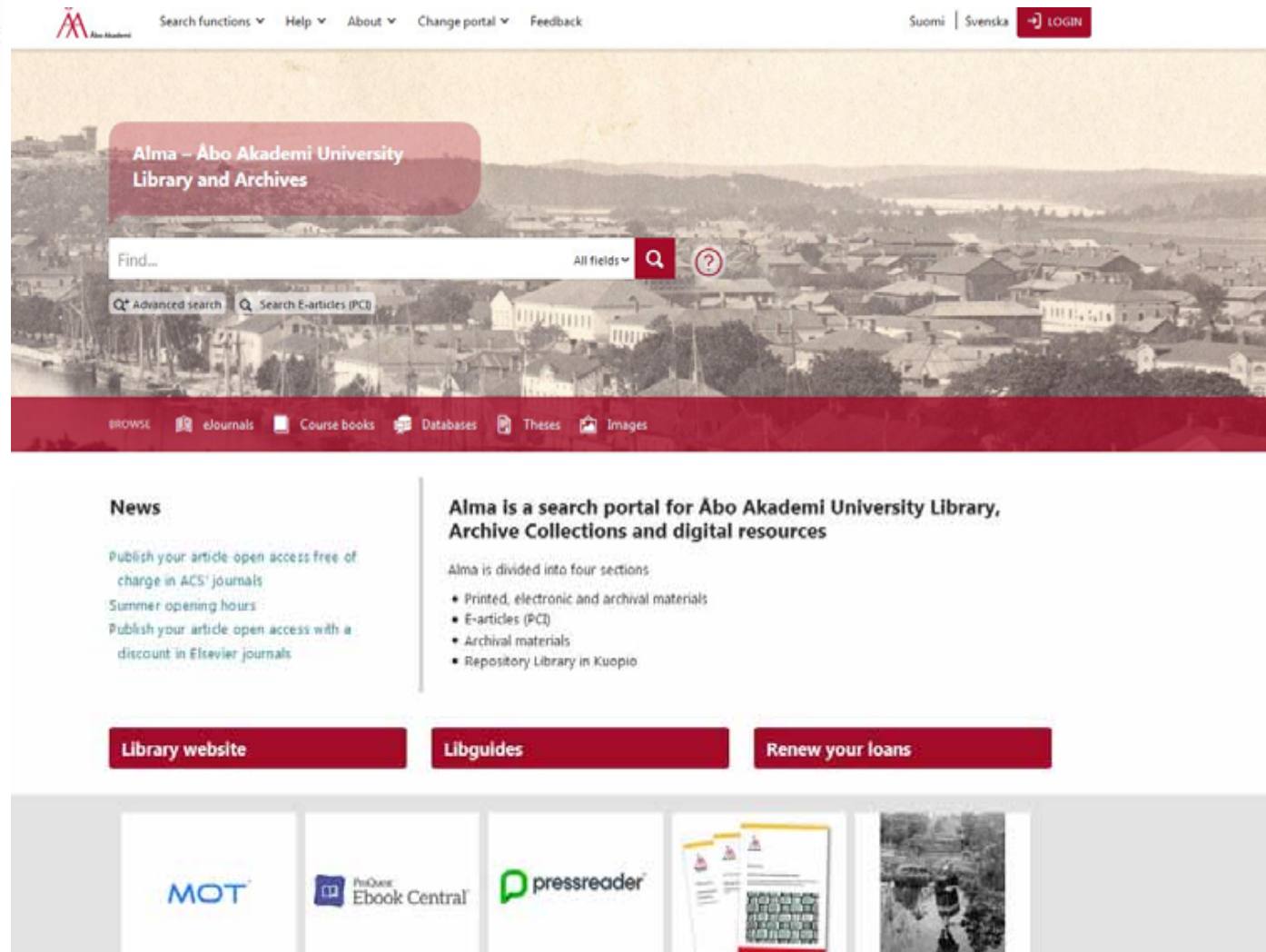
# LIBRARY FACILITIES AND SERVICES

- Reading rooms, group rooms, carrels
- Wifi, computers, copying and scanning facilities
- Information specialists who can help you find the information you need





# ALMA - THE KEY TO OUR PRINTED AND ELECTRONIC RESOURCES



The screenshot shows the Alma library portal homepage. At the top, there is a navigation bar with the Åbo Akademi logo, search functions, help, about, change portal, and feedback links. The main header features a large banner image of a town with a red overlay containing the text "Alma - Åbo Akademi University Library and Archives". Below the banner is a search bar with a "Find..." input field, a dropdown menu for "All fields", and a search button. There are also links for "Advanced search" and "Search E-articles (PCL)". A red navigation bar at the bottom of the banner contains links for "BROWSE", "eJournals", "Course books", "Databases", "Theses", and "Images".

**News**

Publish your article open access free of charge in ACS' journals  
Summer opening hours  
Publish your article open access with a discount in Elsevier journals

**Alma is a search portal for Åbo Akademi University Library, Archive Collections and digital resources**

Alma is divided into four sections

- Printed, electronic and archival materials
- E-articles (PCL)
- Archival materials
- Repository Library in Kuopio

**Library website** **Libguides** **Renew your loans**

Below the navigation bar, there is a row of logos for various services: MOT, ProQuest Ebook Central, pressreader, and a small image of a book.



# LIBGUIDES

## Libguides

SVENSKA

ENGLISH

Libguides holds tailor-made resource and information retrieval guides for students and staff of Åbo Akademi University and Novia University of Applied Sciences. Find journals and databases as well as support for reference management.

### Åbo Akademi

Chemical Engineering & Natural Science  
Human Rights and International Law  
Psychology and Logopedics

Guide for international students in Turku  
Guide for international students in Vaasa

Library services for researchers  
Reference Management (RefWorks & Mendeley)

### Novia

Leadership and Service Design  
Maritime Management  
Tourism



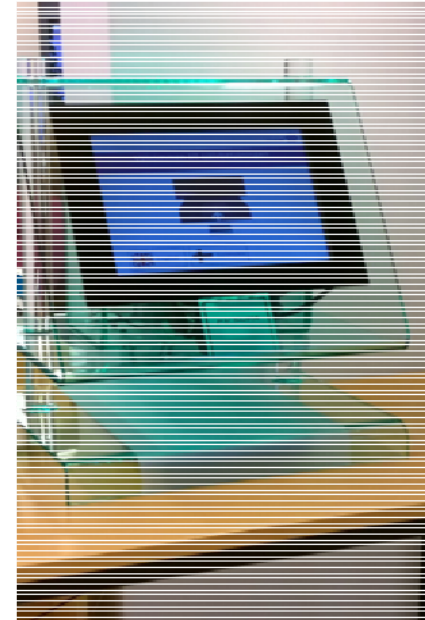
# HOW DO I REQUEST AND RESERVE BOOKS AND JOURNALS IN ALMA?

- In the Arken, ASA and Axelia libraries, you'll find most of the books on open shelves
- The Book Tower has closed stacks, and the books and journals must be **requested in** Alma <https://abo.finna.fi/>
- Charged books can be **reserved** in Alma. You'll receive an e-mail notice when the book is ready to be picked up



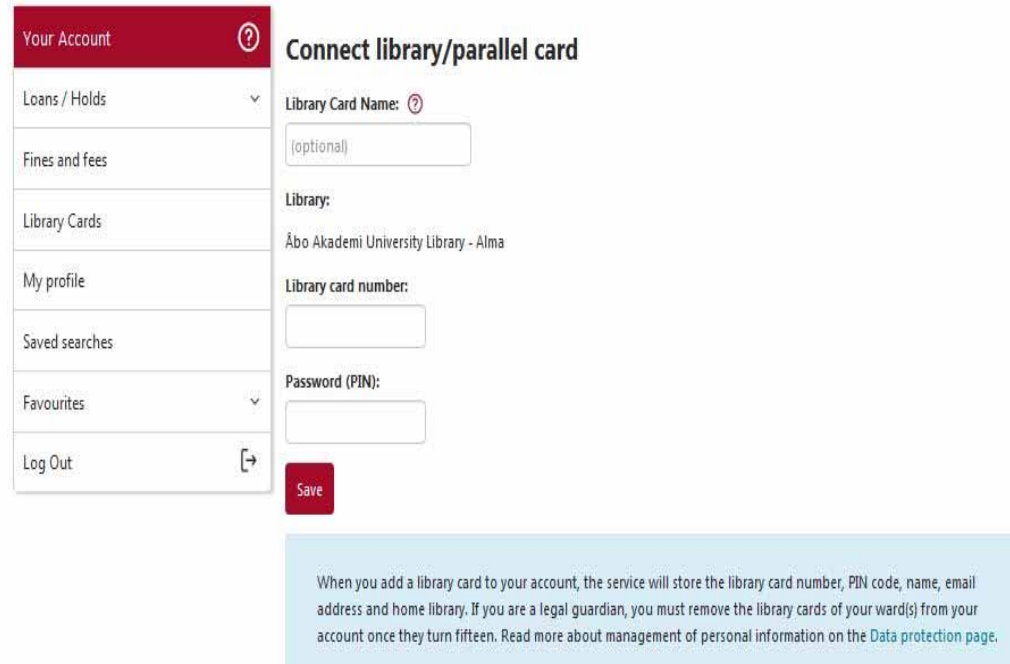
# HOW DO I BORROW BOOKS?

- Requested and reserved books must be picked up within a week, course books within 3 days
- You'll find these books on a self-service shelf under your surname
- Borrow the books at a self-checkout machine (or at the library desk)



# REMOTE ACCESS TO ALMA AND E-RESOURCES

- When off campus, log in with your ÅAU username and password
- After login, please connect your library card to your account



The screenshot shows the 'Your Account' section of the Alma library system. On the left is a sidebar menu with options: 'Loans / Holds', 'Fines and fees', 'Library Cards', 'My profile', 'Saved searches', 'Favourites', and 'Log Out'. The main area is titled 'Connect library/parallel card' and contains the following fields: 'Library Card Name' (optional), 'Library' (set to 'Åbo Akademi University Library - Alma'), 'Library card number', and 'Password (PIN)'. A red 'Save' button is at the bottom. A light blue informational box at the bottom states: 'When you add a library card to your account, the service will store the library card number, PIN code, name, email address and home library. If you are a legal guardian, you must remove the library cards of your ward(s) from your account once they turn fifteen. Read more about management of personal information on the [Data protection page](#).'

# LIBRARY CARD



- Apply for a library card: <https://www.abo.fi/en/library/borrow/>
- Fetch your card at any library desk
- When you pick up the library card, you have to show a valid ID. The card is free of charge
- Connect your library card to your account in Alma and choose a PIN code. The default PIN code is your last name

# LOAN PERIODS

- 28 days
  - 14 days – textbooks from the ASA Library
  - A reminder will be sent to your mail 3 days before the due date
- 
- **Remember that you are responsible for your loans  
Renew your loans or return your books on time. If  
not, you will lose your borrowing rights!**

# LOSS OF BORROWING RIGHTS

- 14 days after the due date, but  
7 days after the due date for course books from the ASA Library
- Restoration of borrowing rights 9 €
- NB! Textbooks from the ASA Library 9 €/book
- Until you have payed the restoration fee, your borrowing and renewing rights are suspended at all library units



# FOUR SERVICE UNITS

Arken



ASA



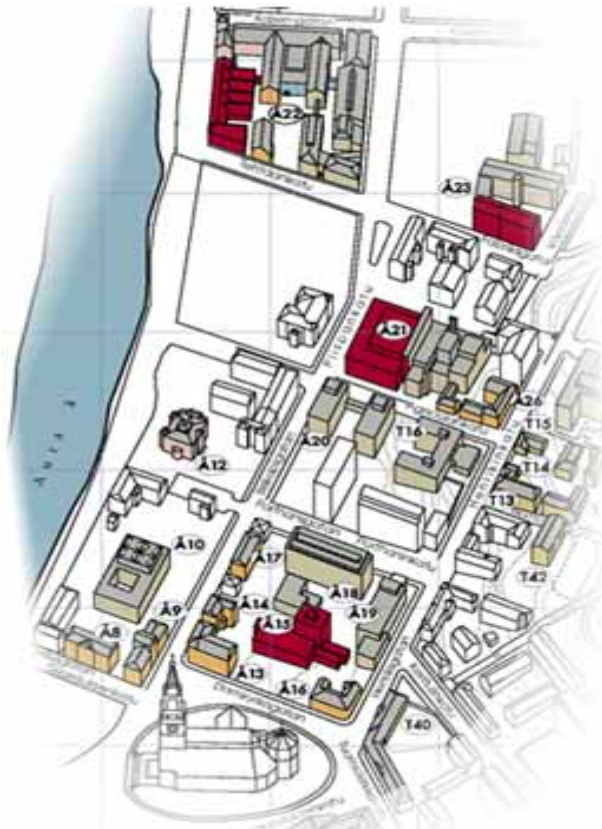
Axelia



The Book  
Tower



# WHERE ARE WE...?



# ARKEN LIBRARY

- Culture, History, Philosophy, Logopedics, Psychology, Languages, Gender Studies
- Reading desks

Self service 9:00-12:00, ÅA key required



# ASA LIBRARY

- First floor: Course books
- Second floor:
  - Social and Political Sciences,  
Economics, Business
  - Reading room, group room
  - Novia collections

Self service 9:00-12:00, ÅA  
key required





# AXELIA LIBRARY

- Science, Engineering, Chemical Engineering and Information technology
- Reading rooms, carrels

Available  
7:00-22:00,  
ÅA key required



# COLLECTIONS IN GEOHUSET AND BIOACITY

Geohuset: Geology and Mineralogy

Biocity:

- Environmental and  
Marine Biology, 1st floor
- Cell Biology, 1st floor
- Biochemistry, 2nd floor
- Pharmacy, 2nd floor





# THE BOOK TOWER

- A silent reading room seating 84
- Closed stacks
- Archive collections and an archive reading room



# STUDENT FACILITIES IN THE BOOK TOWER, BRYGGAN



Longer opening hours – for students with ÅAU key from 7:00-22:00 (01:00) Mon-Sun

Provides:

- Room for studying and socializing
- Rooms for group work
- Access to journals and daily newspapers
- Pentry



# COURSES IN ENGLISH

- The Alma search portal 16.1 at 9:15
- RefWorks (reference management) 11.2 at 9:15

Venue: The Book Tower. No registration needed!



# OTHER LIBRARIES IN TURKU (ÅBO)

- Activate your library card at

- Turku University Library
- Turku University of Applied Science



**TURUN AMMATTIKORKEAKOULU**  
TURKU UNIVERSITY OF APPLIED SCIENCES

- Turku City Library, a public library





# USEFUL LINKS

- **The Library web site:** <https://www.abo.fi/en/library/>  
A good starting point for searching information  
Shows our opening hours, addresses and maps to the library units
- **Our Libguides:** <http://libguides.abo.fi/>
- **Facebook:** <https://www.facebook.com/Akademibiblioteket>
- **Our e-mail address:** [library@abo.fi](mailto:library@abo.fi)





THANK YOU!  
TACK!

